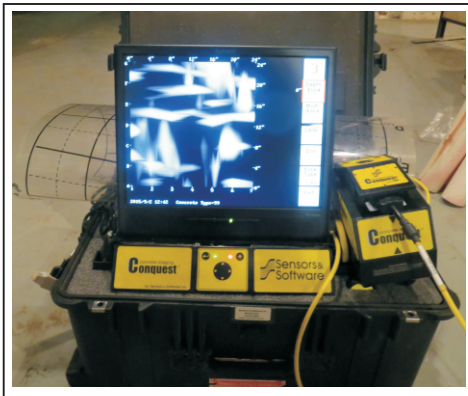
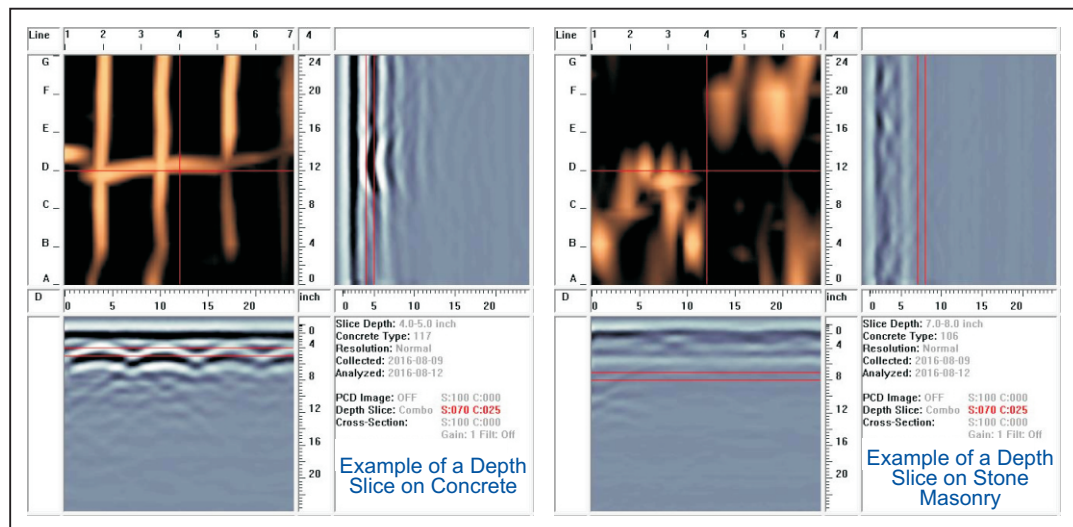


Masonry & Concrete Investigations GROUND PENETRATING RADAR

- Ground Penetrating Radar (GPR) is a non-destructive test method which incorporates radar antennas that emit very short, precisely timed pulses of radio frequency energy into the structure under test.
- The pulses are emitted from a scanning head as connected odometer wheels are moved over a temporary 24-in x 24-in test grid at 4-in spacings on an 'X' & 'Y' axis.



- Part of the energy subsequently echoes back to the surface to be analysed by a computer, which records how "loud" the signal is and how long it takes to return to the antenna.
- A computer software program is then used to analyse the raw data and generate the results and images, typically interpreted as multi-layered slices through the depth of the structure under evaluation.
- Depending on the structure type, the data can then be used to evaluate potential hidden conditions, such as steel geometry, core rubble voids, etc.



Specialist Consulting Services for the Restoration and Protection of Concrete & Masonry Buildings & Structures